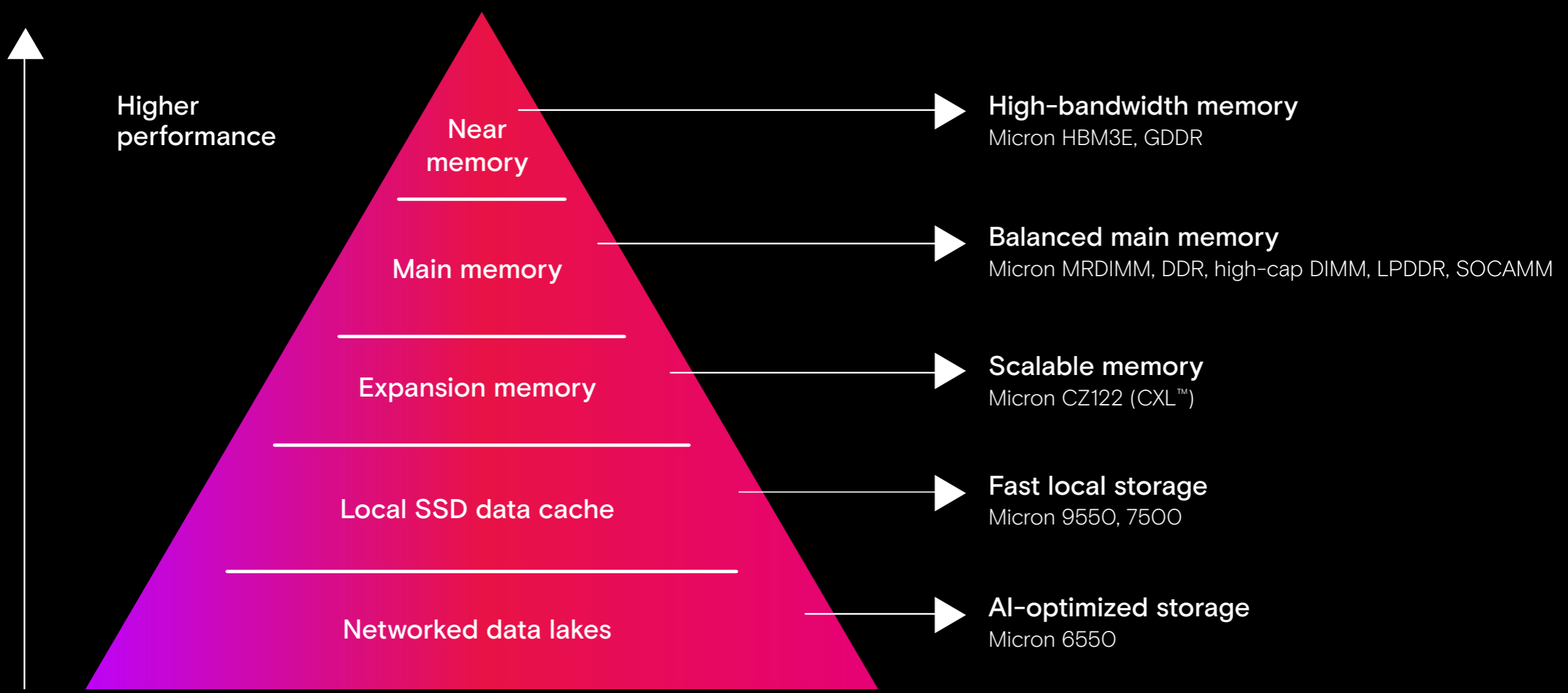


# Everywhere there's AI, there's Micron



## Micron product technology deployment advantages

### High performance

For faster training and insights

<p>DDR5</p> <p><b>8,800MT/s<sup>1</sup></b></p>	<p>SSDs</p> <p><b>3.3M IOPS<sup>2</sup></b></p>
---	---

### High capacity

For growing AI Large Language Models (LLMs)

<p>DDR5</p> <p><b>256GB<sup>1</sup></b></p>	<p>SSDs</p> <p><b>61.44TB<sup>3</sup></b></p>
---	---

### High efficiency

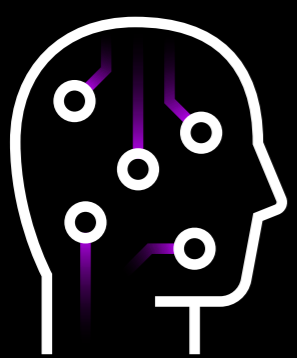
With better performance per watt

Micron SSDs

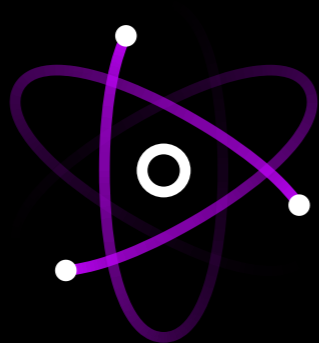
**Up to 29%**

less energy used by AI training systems<sup>4</sup>

## AI applications accelerated with Micron memory and storage



Deep learning



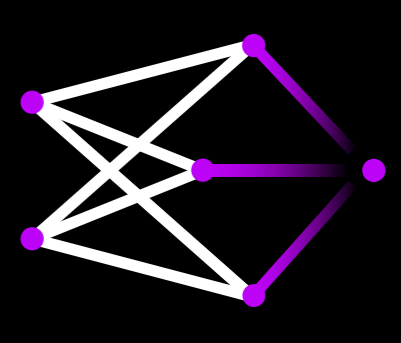
Language processing



Computer vision



Predictions & forecasting



Generative AI

[www.microncpg.com/AI-solutions](http://www.microncpg.com/AI-solutions)

<sup>1</sup> Based on JEDEC specifications

<sup>2</sup> The Micron 9550 NVMe SSD offers up to 3.3M IOPS. More details are available here: [Micron® 9550 NVMe™ SSD](#)

<sup>3</sup> The Micron 6550 NVMe SSD offers 61.44TB capacities. More details are available here: [Micron® 6550 NVMe™ ION SSD](#)

<sup>4</sup> More details about the power efficiency of Micron high-performance SSDs can be found here: [Micron 9550 NVMe™ SSD and BaM Technical Brief](#)